



CONSTRUCTION SPOTLIGHT

ISSUED OCTOBER 8, 2019

PURPOSE OF THIS EDITION

To provide an overview of upcoming traffic impacts to 32 Ave leading up to and including the Thanksgiving long weekend from October 7–14, 2019. Signage will be in place for all detours and lane closures.

WHAT'S HAPPENING IN OCTOBER

LANE CLOSURES AND DETOURS

Water Utility Network Upgrades Stage One: October 7–10

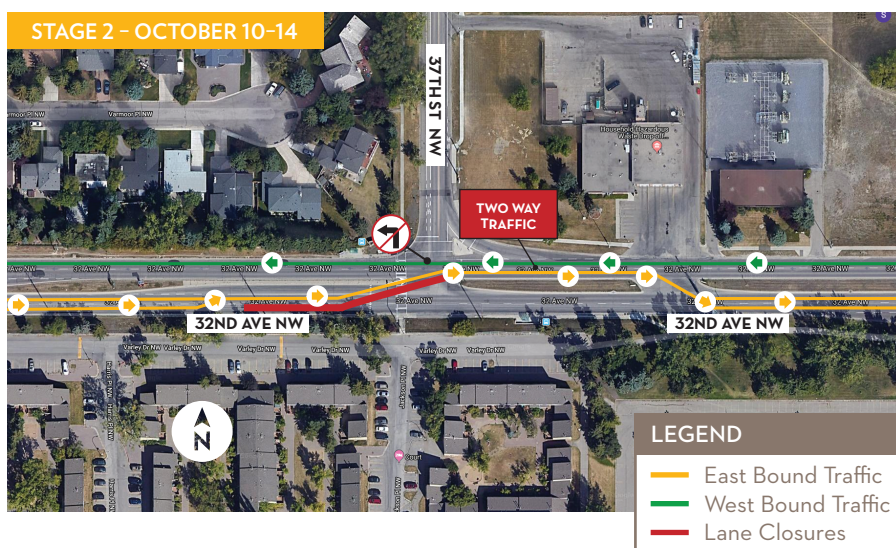
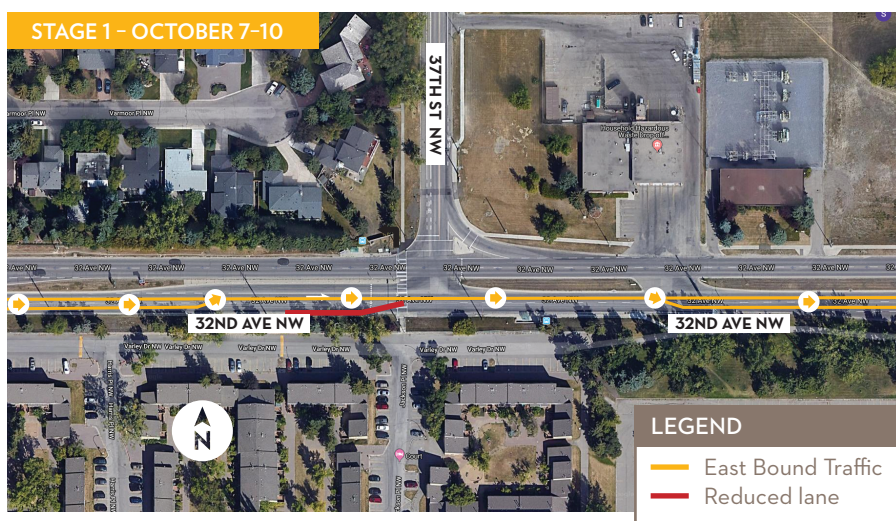
The Trust will be doing work on the 32 Ave water utilities and drivers will experience off peak lane closures affecting east bound traffic on 32 Ave. Traffic will be reduced to one lane approaching 37 St.

Water Utility Network Upgrades Stage Two: October 10–14

During the second stage of the water utilities work on 32 Ave, traffic on both east and west bound will be affected. This will begin at approximately 9 am on Thursday, October 10. This will result in east bound traffic approaching 37 St being reduced to one lane with a shift in traffic pattern onto one west bound lane. During this detour there will be no left hand turns onto 37 St for east bound traffic.

To accommodate this change in traffic patterns west bound traffic on 32 Ave will also be reduced to one lane approaching 37 St.

Traffic flow will return to normal patterns prior to 5 am on Tuesday, October 15.



HOW CAN I STAY INFORMED?

For responses to questions and concerns about safety and construction in University District 24 hours a day, please call the **Construction Hotline** at **1.855.400.5556**.

The Trust is a different kind of real estate development company. We will achieve the community vision through a strong commitment to our stakeholders and through our guiding principles of collaboration, innovation, future-focus, and leadership in community building.